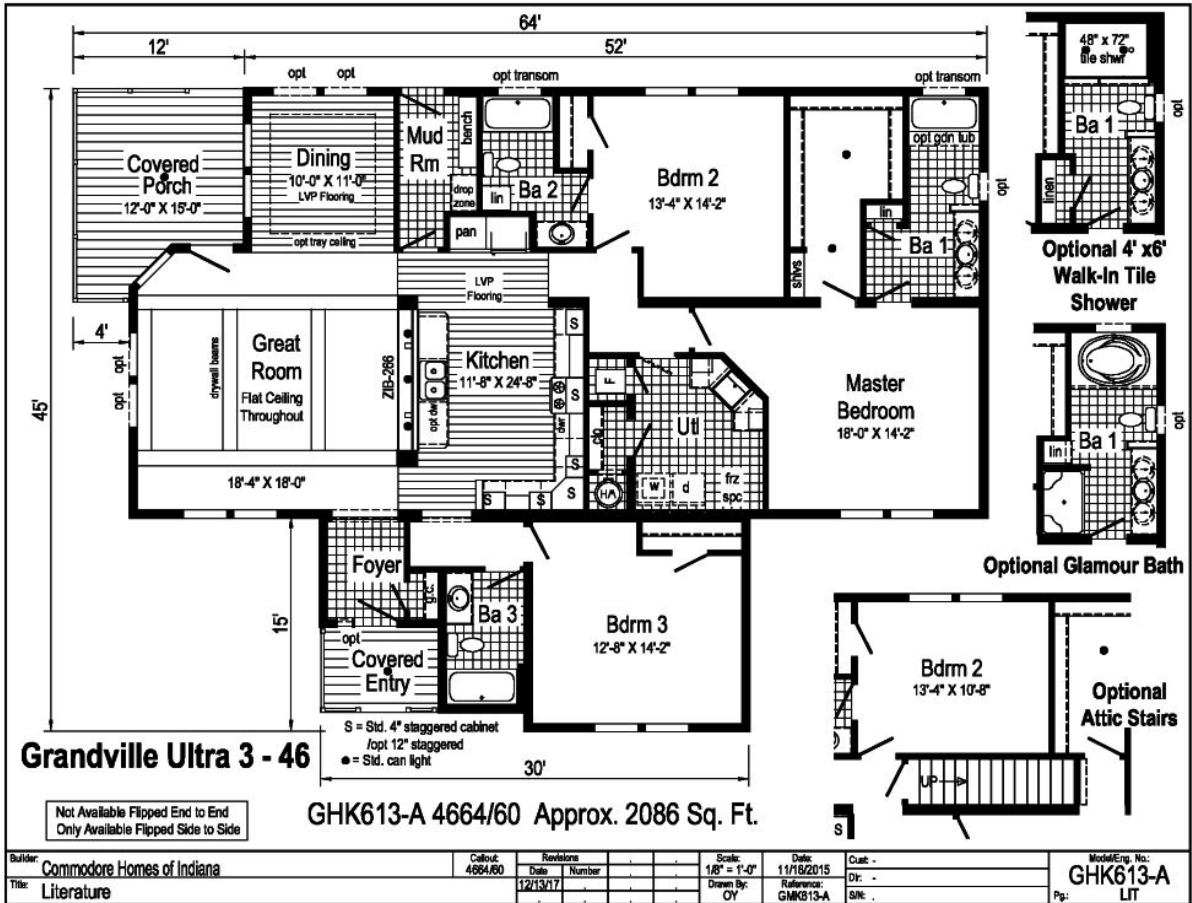


PRINTABLE INFO SHEET

Series: Grandville LE Ranch
 Model: GHK613A Grandville Ultra 3 -
 46



About This Model

Style: Ranch / Bedrooms: 3 / Bathrooms: 3 / Square Feet: 2086

CUSTOMER CONTACT

Notes: _____

PRINTABLE INFO SHEET

Series: Grandville LE Ranch
Model: GHK613A Grandville Ultra 3 - 46



Standards & Features

Interior

- Smooth Drywall Throughout
- Stipple Ceiling
- Flat Ceiling with 8'0" Sidewall
- Coveless Ceiling Joints
- Brushed Nickel Langford 3-Arm Dining Room Light
- Alabaster Glass Pendant Nook Light
- Glass Light Shades Throughout
- Mortise Door Hinges
- Metal Interior Passage Sets
- Floor Mount Door Stops
- Smoke Detectors with Battery Back-Up
- Wire Shelving in Guest Closet
- Brushed Nickel Interior Package
- Includes: Door Handles, Hinges, Huntington Brass Metal Faucets and Cabinet Hardware

Exterior

- Patina Lantern Light at Front Door
- Patina Square Light at Rear Door
- One GFI-Protected Exterior Receptacle
- Vinyl Dutch Lap Siding with Larger Starter Strip to Cover Sill Plate
- O.S.B. Sheathing Under Siding
- Fixed Roof with Shingles and 10" Eaves
- Ridgevent Roof Ventilation System
- 3/0x6/8 6-Panel Fiberglass Front and Rear Door with Deadbolt Lock
- Vinyl Insulated Low-E Windows
- 12" Raised Panel Shutters on Front Door Side

Construction

- Floor System on 16" Centers with 3/4" OSB Decking***
- 2x6 Floor Joist on 28 Wide Models
- 2x8 Floor Joist on 32 Wide Models
- 2x6 Exterior Walls on 16" Centers**
- 2x4 Interior Walls
- 30# Roof Load
- Recessed Frame Design without Perimeter Blocking

Kitchen

- GE 30" Standard Gas Free Standing Range with Electronic Ignition
- Power Range Hood with Light
- GE 18 Cubic Foot, No-Frost Refrigerator with Icemaker
- Stainless Steel Double Bowl Sink (33x22x8)
- Tight Mesh Shelving in Pantry
- One USB Recept

Baths

- 60" One-Piece Fiberglass Tub/Showers
- One-Piece Fiberglass Shower with Glass Door in Glamour Baths
- Fiberglass Soaker Tub in Glamour Baths
- Anti-Scald Valves on Showers & Tubs
- 1.6 Gallon Per Flush Elongated Toilets
- China Stool, Tank, and Lid
- China Sinks with Overflows and Pop-Up Drains
- Lighted Vent Fan in Each Bath
- Factory Framed Mirrors - All Baths

CUSTOMER CONTACT

Notes:

PRINTABLE INFO SHEET

Series: Grandville LE Ranch
Model: GHK613A Grandville Ultra 3 - 46



Standards & Features (continued)

Cabinetry

- Evermore Custom Cabinetry (KCMA Certified)
- Hardwood Oak Mission Flat Panel Cabinet Doors
- Crown Moulding on Overhead Cabinets
- Contemporary Cabinet Hardware
- 30" Height Overhead Cabinets
- 4" Staggered Overhead Cabinets
- Lined Overhead Cabinets
- Adjustable Shelves in Overhead Cabinets
- Dovetail Drawer Construction
- Full Extension 75# Drawers Guides
- Base and Center Shelf in Base Cabinets
- Wilson Art Laminate Countertops with Laminate Edging
- 4" Wilson Art Laminate Backsplash
- 33" High Vanities
- Base Shelf in Vanities

Utilities

- 100 AMP Electrical Service
- Copper Wiring Throughout
- Auto Ignition Gas Furnace
- Woodgrain Furnace Door
- Aluminum Heat Ducts
- Air Exchanger System for Furnace
- In-Floor Cross over Heating System
- Air Conditioning Thermostat with 5-Wires
- 40 Gallon Electric Water Heater with Pan
- Main Water Line Shut-Off Valve
- Water Shut-Off Valves - Where Accessible
- Plumb and Wire for Washer
- Wire and Vent for Dryer

Utilities (continued)

- One Exterior Water Faucet

Insulation

- R-11 Fiberglass Insulation in Floor
- R-19 Fiberglass Insulation in Walls
- R-38 Avg. Blown Insulation in Ceiling

Flooring

- Choice of Various Styles of SHAW Carpet with ShawGuard Carpet Protector
- 3 Styles: Mantra, Standout or It's Cozy
- Choice of Several Standard color options and numerous optional colors
- Standard Carpets are all 16 and 18 oz
- Rebond Carpet Pad with Tackstrip Carpet Installation
- Congoleum No-Wax Vinyl Floor Coverings
- Congoleum Entry Foyer Vinyl Flooring

Bedrooms

- Ceiling Lights
- Egress Window Each Bedroom
- Wire Shelving in Wardrobes
- Switched Light in All Walk-In Closets

Energy Efficient Standards Include:

- Low-E Vinyl Insulated Windows
- Fiberglass Exterior Doors
- R-11 Fiberglass Insulation in Floor
- R-19 Fiberglass Insulation in Walls
- R-38 Avg. Blown Insulation in Ceiling

CUSTOMER CONTACT

Notes:
