

PRINTABLE INFO SHEET

Series: Landmark Flex

Model: 2LM2424-V Landmark Flex



About This Model

Style: Ranch / Bedrooms: 3 / Bathrooms: 2 / Square Feet: 1600

CUSTOMER CONTACT

Notes:

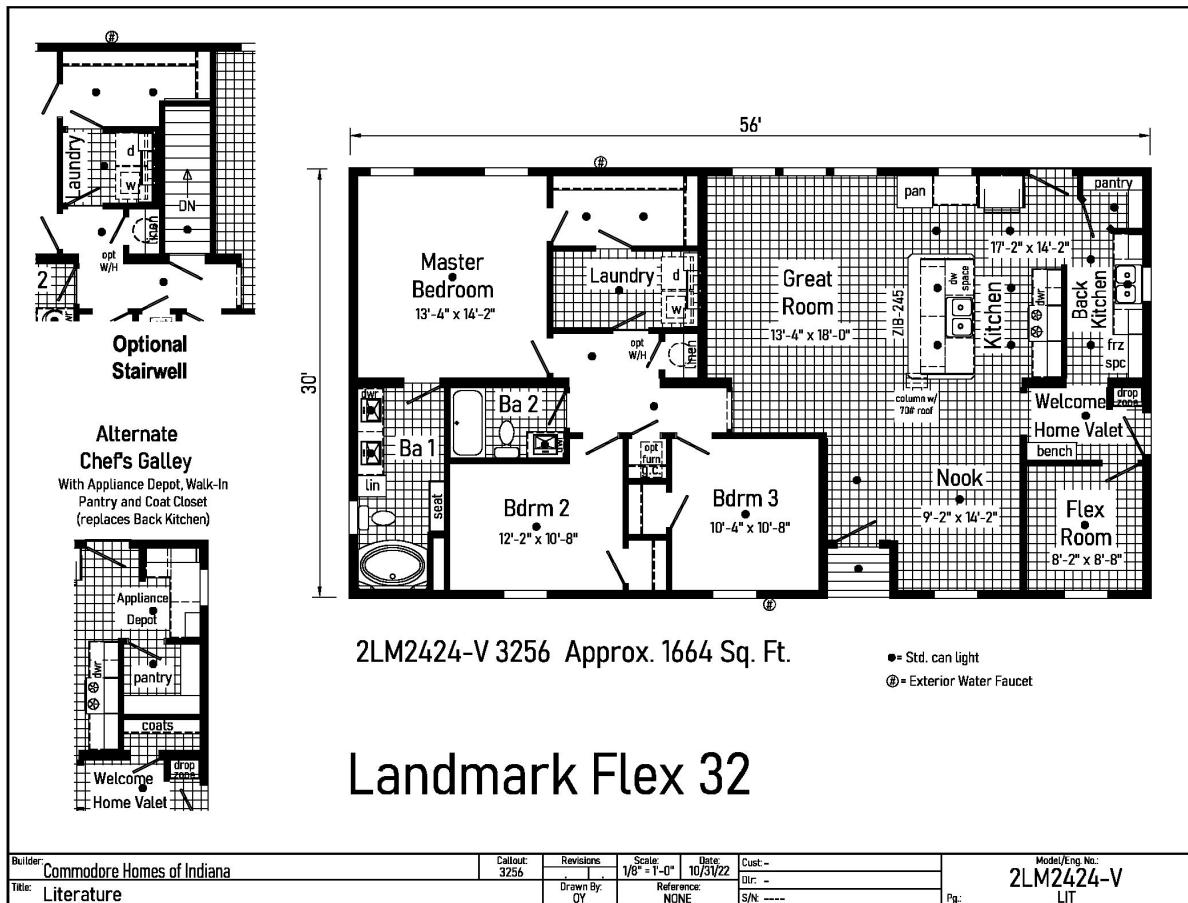
PRINTABLE INFO SHEET

Series: Landmark Flex

Model: 2LM2424-V Landmark Flex



Floorplan



CUSTOMER CONTACT

Notes:

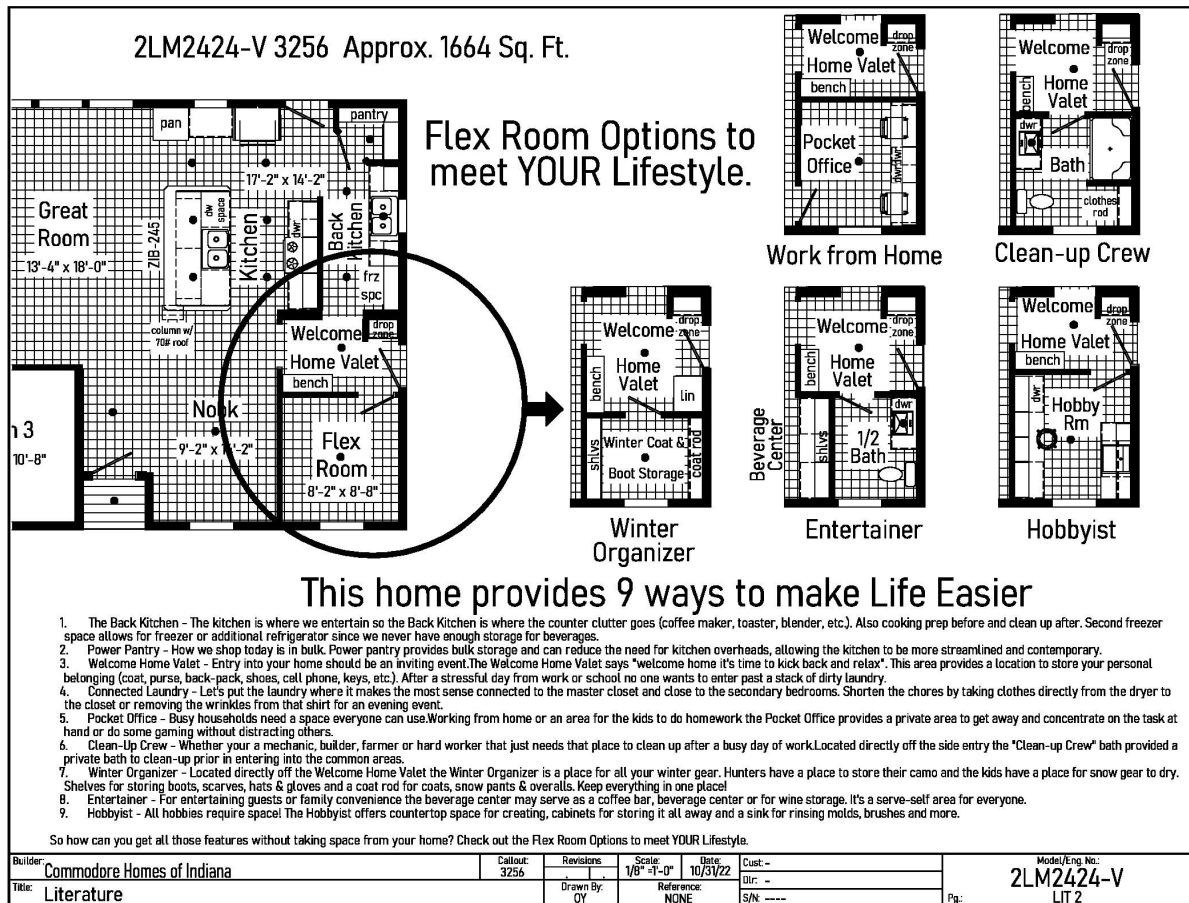
PRINTABLE INFO SHEET

Series: Landmark Flex

Model: 2LM2424-V Landmark Flex



Floorplan



CUSTOMER CONTACT

Notes:

PRINTABLE INFO SHEET

Series: Landmark Flex

Model: 2LM2424-V Landmark Flex



Standards & Features

Interior

Smooth Drywall Throughout
Flat Ceiling Throughout
Stipple Ceiling
Coveless Ceiling Joints
8' Sidewall Height
Recessed LED Lighting
Mortise Door Hinges
Metal Interior Passage Sets
Door Stops
White 2 1/4" Door & Window Casing
White 3" Baseboard Moulding
White 2-Panel Doors
Smoke Detectors with Battery Back-Up
Wire Shelving in Guest Closet
Brushed Nickel Interior Hardware & Lighting

Exterior

Gatsby Light at Front Door
Gatsby Light at Rear Door
GFI-Protected Exterior Receptacles at Doors
Vinyl Dutch Lap Siding with Larger
Starter Strip to Cover Sill Plate
O.S.B. Sheathing
5/12 Roof with 10" Eaves
40# Roof Load
Architectural Shingles
Ridgevent Roof Ventilation System
3/0x6/8 6-Panel Fiberglass Front and Rear
Door with Deadbolt Lock
Heritage Vinyl Insulated Low-E Argon
Windows with no grids

Exterior (continued)

Raised Panel Shutters on Front Door Side

Kitchen

Omit Appliances - Prep for Refrigerator,
Gas Range, & Dishwasher
Stainless Steel Range Hood Installed
Stainless Steel Double Bowl Sink (33x22x8)
One USB Receptacle

Baths

One Piece Fiberglass Tub/Showers
Garden Tub/Shower-Master Bathroom
Tub Overflows
Anti-Scald Valves on Showers & Tubs
1.6 Gallon Per Flush Elongated Toilets
China Stool, Tank, and Lid
China Sinks with Overflows and Pop-Up
Drains
Double Lavs
Drawer Bank (each bathroom)
Lighted Vent Fan in Each Bath
LED Ceiling Lights
Pencil Edge Mirrors

Cabinetry

Hardwood Stiles
3/4 Overlay Hardwood Mission Flat
Panel Cabinet Doors
Evermore Custom Cabinetry
Crown Moulding on Overhead Cabinets
Transitional Cabinet Hardware
42" Overhead Cabinets
Lined Overhead Cabinets

CUSTOMER CONTACT

Notes:

PRINTABLE INFO SHEET

Series: Landmark Flex

Model: 2LM2424-V Landmark Flex



Standards & Features (continued)

Cabinetry (continued)

Adjustable Shelves in Overhead Cabinets
Dovetail Drawer Construction
75#Drawer Guides
Base and Center Shelf in Base Cabinets
WilsonArt Laminate Countertops with
Laminate Edging
4" WilsonArt Laminate Backsplash
36" High Vanities
Base Shelf in Vanities
Refrigerator Surround
Washer/Dryer Overhead Cabinets

Utilities

200 AMP Electrical Service
2nd Conduit
Copper Wiring Throughout
Perimeter Boots & Registers
Deleted:
Furnace
Ceiling Air Return System
Main Heat Trunk
Thermostat Wire
Omit Water Heater
Structured Flow Brushed Nickel Faucets
Main Water Line Shut-Off Valve
Water Shut-Off Valves - Where Accessible
Plumb and Wire for Washer
Wire and Vent for Dryer
Two Exterior Water Faucets
Recessed Dryer Box (where applicable)

Insulation

R-19 Fiberglass Insulation in Walls
R-38 Avg. Blown Insulation in Ceiling

Flooring

SHAW 15 oz. Carpet w/ ShawGuard
Carpet Protector
Rebond Carpet Pad with Tackstrip
Carpet Installation
No-Wax Vinyl Floor Coverings
Entry Foyer Vinyl Flooring

Bedrooms

Recessed LED Lights
Egress Window in Each Bedroom
Wire Shelving in Wardrobes
4" LED Light in All Walk-In Closets

Construction

2x10 Floor Joists 16" on Center
2x6 Exterior Walls 16" on Center
2x4 Interior Walls
40# Roof Load
32 wide Floor Stabilizer

Available Options

- Basement Stairwell & Standard location only
- Shake It Up Carpet
- Lino per room in place of carpet
- Matching Vinyl Transition Strip
- Luxury Vinyl Plank shipped loose only
- 40 or 50 Gallon electric hot water heater
- Heating package (Furnace, return air (Optional trunk lines available) (Gas and Electric)
- Prep for On-site furnace installation

CUSTOMER CONTACT

Notes:

PRINTABLE INFO SHEET

Series: Landmark Flex

Model: 2LM2424-V Landmark Flex



Standards & Features (continued)

Available Options (continued)

- Prep for On-site Water Heater installation
- Ship loose duct material for Furnace
- Heat Ducts Installed
- Additional LED Can Lights
- Wire and Switch for Fan
- Ceiling Fan
- Wire for Electric Range
- Extra Exterior Recept
- All Optional Cabinet Color Choices (White Painted, Shadow Grey Painted, Deep Blue Painted)
- 60x32 Fiberglass Shower IPO standard Garden Tub Master Bath or ipo Tub/Shower Bath 2
- Upgrade Insulation – Sidewall and Ceiling
- 4 Lite White Exterior Door IPO standard
- 2 Panel ½ Glass with Internal Blinds IPO standard
- Fire Door White IPO standard
- Full View Door with Internal Blinds ipo window
- Vinyl Sliding Glass Door
- Extra Shutters
- Optional Lineal ipo shutters and Extra Lineal
- Market Square siding
- 5/12 Roof Pitch 50# and 70# (70# requires 16 o.c.)
- Double Close Up Plastic
- Pearl Appliance package (Gas or Electric)
- SS Over the Range Microwave
- Prep for Microwave over range
- Additional 18 cu ft Black Refer with Ice for Back Kitchen
- Additional 20 cu ft Top Freezer Stainless Steel Refer with Ice for Back Kitchen

Available Options (continued)

- Wine/Beverage Cooler for Entertainer Option
- Drape Package A
- All state required codes

CUSTOMER CONTACT

Notes:
