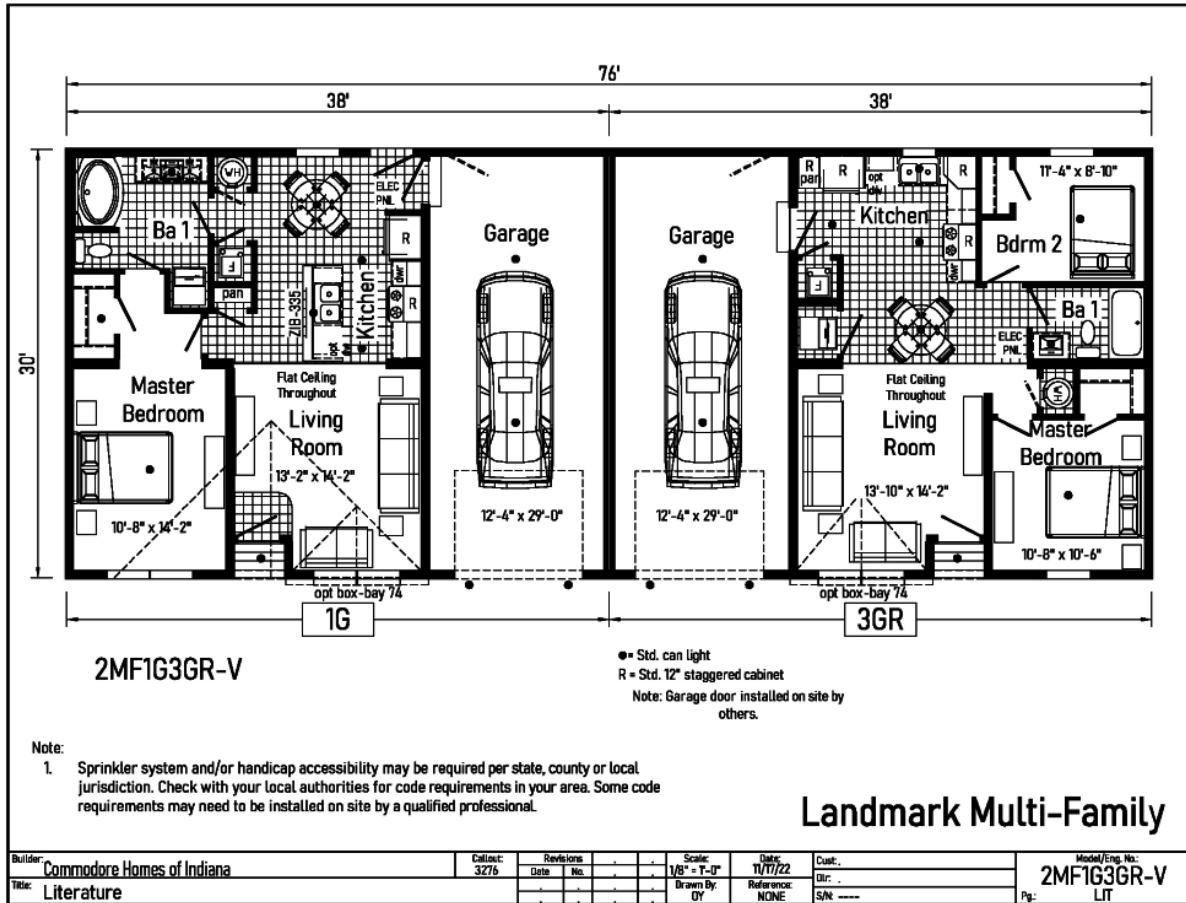


PRINTABLE INFO SHEET

Series: Landmark Multi-Family
 Model: 2MF1G3GR-V Landmark
 Multi-Family



About This Model

Style: Ranch / Bedrooms: 0 / Bathrooms: 0 / Square Feet: 0

CUSTOMER CONTACT

Notes: _____

PRINTABLE INFO SHEET

Series: Landmark Multi-Family
Model: 2MF1G3GR-V Landmark Multi-Family



Standards & Features

Interior

Smooth Drywall Throughout
Flat Ceiling Throughout
Stipple Ceiling
Coveless Ceiling Joints
8' Sidewall Height
Recessed LED Lighting
Mortise Door Hinges
Metal Interior Passage Sets
Door Stops
White 2 1/4" Door & Window Casing
White 3" Baseboard Moulding
White 2-Panel Doors
Smoke Detectors with Battery Back-Up
Wire Shelving in Guest Closet
Brushed Nickel Interior Hardware

Exterior

Gatsby Light at Front Door
Gatsby Light at Rear Door
GFI-Protected Exterior Receptacles at Doors
Vinyl Dutch Lap Siding with Larger Starter Strip to Cover Sill Plate
O.S.B. Sheathing
Fixed Roof with 10" Eaves (26'8" & 30')
16" Eaves (27'4")
Architectural Shingles
Ridgevent Roof Ventilation System
3/0x6/8 6-Panel Fiberglass Front and Rear Door with Deadbolt Lock
Heritage Vinyl Insulated Low-E Argon Windows with no grids

Exterior (continued)

Raised Panel Shutters on Front Door Side

Kitchen

Whirlpool Black Deluxe 30" Gas Free Standing Range
Power Range Hood with Light
Whirlpool Black 18 Cubic Foot, No-Frost Refrigerator w/ Ice Maker
Stainless Steel Double Bowl Sink (33x22x8)
One USB Receptacle

Baths

One Piece Fiberglass Tub/Showers
Garden Tub/Shower-Master Bathroom
Tub Overflows
Anti-Scald Valves on Showers & Tubs
1.6 Gallon Per Flush Elongated Toilets
China Stool, Tank, and Lid
China Sinks with Overflows and Pop-Up Drains
Lighted Vent Fan in Each Bath
Recessed LED Lighting
Pencil Edge Mirrors

Cabinetry

Hardwood Stiles
3/4 Overlay Hardwood Mission Flat Panel Cabinet Doors
Evermore Custom Cabinetry
Crown Moulding on Overhead Cabinets
Cabinet Pull Hardware
30"/42" Staggered Wall Overhead Cabinets or 42" Overhead Cabinets

CUSTOMER CONTACT

Notes:

PRINTABLE INFO SHEET

Series: Landmark Multi-Family
Model: 2MF1G3GR-V Landmark Multi-Family



Standards & Features (continued)

Cabinetry (continued)

- Matching Lined Overhead Cabinets
- Adjustable Shelves in Overhead Cabinets
- Dovetail Drawer Construction
- 75#Drawer Guides
- Base and Center Shelf in Base Cabinets
- WilsonArt Laminate Countertops with Laminate Edging
- 4" WilsonArt Laminate Backsplash
- 36" High Vanities
- Base Shelf in Vanities
- Bump-out Staggered Wall Cabinet over Range
- Refrigerator Surround

Utilities

- 200 AMP Electrical Service
- Copper Wiring Throughout
- Bryant Gas Furnace w/ Coil
 - Perimeter Heat
 - Furnace Door
 - Fiberglass Heat Ducts
 - Air Return System
- Programmable Thermostat
- 40 Gallon Electric Water Heater with Pan
- Structured Flow Brushed Nickel Faucets
- Main Water Line Shut-Off Valve
- Water Shut-Off Valves - Where Accessible
- Plumb and Wire for Washer
- Wire and Vent for Dryer
- One Exterior Water Faucet
- Recessed Dryer Box (where applicable)

Insulation

- R-19 Fiberglass Insulation in Walls
- R-38 Avg. Blown Insulation in Ceiling

Flooring

- SHAW 15 oz. Carpet w/ ShawGuard Carpet Protector
- Rebond Carpet Pad with Tackstrip
- Carpet Installation
- No-Wax Vinyl Floor Coverings
- Entry Foyer Vinyl Flooring

Bedrooms

- Recessed LED Lighting
- Egress Window in Each Bedroom
- Wire Shelving in Wardrobes
- LED Light in All Walk-In Closets

Construction

- 2x10 Floor Joists 16" on Center**
- 2x6 Exterior Walls 16" on Center**
- 2x4 Interior Walls
- 40# Roof Load
- 32 wide Floor Stabilize

Optional Manufactured Home:

- R-11 Floor Insulation, Recessed Frame Design without Perimeter Blocking, 2x6 Floor Joist on 28 Wide Models, 2x8 Floor Joist on 32 Wide Models, 30# Roof Load, & 100 AMP Electrical Service

CUSTOMER CONTACT

Notes:
